

November 2025

Warm Greetings from New Ulm!

It's a pleasure for me to write to you and welcome you to our campus--or back to our campus, as the case may be! We are pleased to have you here with us at Martin Luther College and grateful for the opportunity to train and prepare you as a candidate for the Lord's Gospel ministry. I'm looking forward to meeting our new students in January.

I want to direct your attention to MLC's [online Student Handbook](#). The policies are broken down into easy-to-navigate categories. I encourage you to read through the policies before your arrival on campus.

In addition to the information in the *Student Handbook*, please keep in mind the following:

- Minnesota State statute requires the college to maintain medical and immunization records for all students. The necessary medical forms have already been mailed to you. Please be sure to complete these forms and mail them back to us (if you haven't already done so.)
THIS IS VERY IMPORTANT!!
- Please note the college housing policies on the website. Unless you have received permission from me to live off campus, you will be living in the dormitory, and I will instruct the housing directors to make arrangements for you. The Men's and Women's Housing Directors will be working on 2nd-semester housing arrangements in the weeks to come. We will get more specific housing information to you before your arrival on campus.
- Parking on campus is available! **Students who have permission to live off campus need to purchase a parking sticker as well, please.** Before arriving on campus, please complete the vehicle registration form which, again, is on the MLC Portal either under the Information tab, and then either the menu item called New Student Checklist or the one called Student Parking. We will inform you of parking assignments when you arrive on campus.
- The **dormitories** will open on January 4th, 2026, at noon. When you need to arrive will be based on your status and program**...see below:
 - **Sunday, January 5th:** Early Childhood Student Teacher Orientation
 - **Monday January 6th:** Education Majors Complete Clinical Courses
 - **Monday, January 13th:** Elementary and Middle/Secondary Student Teachers Begin Seminars
 - **Friday, January 17th:** Education & Staff Ministry Student Early Field Experience I (EFE I)
 - **2nd Semester Classes** begin for all students on Thursday, January 24th, 2026.

**Education program students, please watch for communication from the Education Office for any additional information regarding required J-term commitments.

- **Upon arrival on campus, please proceed to your dormitory.** Once you have checked in with your dorm supervisor and received your key, etc., you can move into the dorm. *If you have no J-term responsibilities, make sure that you arrive on Tuesday/Wednesday, January 20-21. The dorms will be open, and the cafeteria will be serving meals.*

What if I have no responsibilities during the J-term?

Even if you are not required to be on campus during the Jay term, you may still arrive on campus during the Jay term if you want to work at your on- or off- campus job. Please contact your dorm supervisor if this will be your plan.

Arrival and Short “Orientation” Meeting

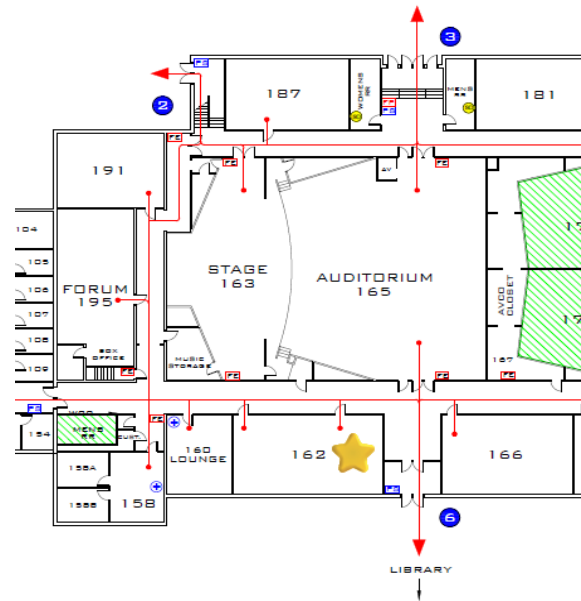
As I mentioned above, please plan your travel in such a way that you arrive on campus in time for our brief orientation meeting, scheduled for **Wednesday, January 21st, from 6pm-8pm in Wittenberg Collegiate Center classroom 162 (on the first floor of the building, indicated with a yellow star below.)**

At that meeting we will go through government mandated information for all students, new and readmitted, to our college. Included in this mailing is a 1-page document that explains how to log into a technology session that will inform you about the technology we use here at MLC. If you have time before you arrive, please go through that orientation. We are asking that you do this before we meet on January 21st in case you have any questions prior to classes beginning.

“Re-Admitted” Students or Students who have left MLC and are now returning....

We understand that life at MLC is not going to be a brand-new experience for you.

Nevertheless, we urge you to come at the times indicated so that you can be up and running as classes begin. Please come and participate in the brief orientation we have planned for you and get yourself ready for the semester. Your cooperation is appreciated!



If I can help you with anything, or answer any kind of question, please don't hesitate to contact me.

You may write to me.... Student Life Office c/o VP Jeff Schone,
1995 Luther Court, New Ulm, MN 56073

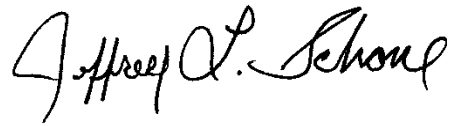
You may call my office at ... 1-507-354-8221, ext. 289

You may call or text my cell phone at ... 507-217-9764

You may email me at ... schonejl@mlc-wels.edu

We are looking forward to welcoming you to school...and to the task of preparing yourself as a candidate for the LORD's Gospel Ministry. See you soon!

Your servant in Christ Jesus,

A handwritten signature in black ink, reading "Jeffrey A. Schone". The signature is written in a cursive, flowing style with a large initial 'J'.

Pastor Jeff Schone
Vice President for Student Life