

# MLC SportsPage



www.mlc-wels.edu

November 16, 2016



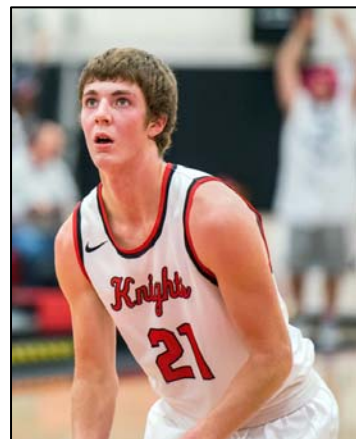
MARTIN LUTHER COLLEGE

## Men's Basketball Opens Season with Loss to SMU

The men's basketball team opened its season with an 84-50 loss to Saint Mary's University on Tuesday.

The Knights led midway through the first half, but SMU took a 12-point lead at halftime and then put the game away with a big run to open the second half.

First-year players **Ian Paulsen** (*LPS*) and **Richard Eckmann** (*Trimont MN*) led the team with 12 and 11 points, respectively, while fellow first-year players **Jeffrey Parker** (*Evergreen*) and **Josh Tomlin** (*LPS*) each scored nine. The Knights feature eight first-year players on the roster, and were picked to finish ninth in the UMAC Preseason Poll.



Paulsen at the line

## Women Drop Opener at GAC



Schoof shoots the three

The women's basketball team was unable to overcome a bad second quarter in an 82-50 loss at Gustavus Adolphus College to open the season on Tuesday.

MLC trailed 17-12 after one quarter, and was then outscored 27-4 in the second period as the Gusties pulled away. The Knights battled in the second half, but were unable to make up the first-half deficit.

**Mariah Schoof** (*MVL*) led MLC with 13 points after making four of her eight shots from the field, including two of three attempts from beyond the three-point arc. **Jade St. Germaine** (*LPS*) added ten points and a team-high nine rebounds.

The Knights were picked to finish sixth in the UMAC Preseason Poll.

## Grev, St. Germaine Named All-UMAC in Volleyball

Junior volleyball players **Kira Grev** (*SCLHS*) and **Jade St. Germaine** (*LPS*) were named First Team All-UMAC. **Rylee Weisensel** (*MVL*) received honorable mention.

### Upcoming Events at MLC

- 11/17 MBB v. Concordia – WI
- 11/18 WBB @Saint Benedict
- 11/19 WBB v. Saint Mary's (@CSB)  
MBB v. Maranatha Baptist
- 11/21 WBB v. Macalester

This marks the third straight year in which Grev received first-team honors. This season, she recorded more than 300 kills and digs for the first time in the same season.

St. Germaine led MLC with 371 total kills, which was the ninth-highest total in program history and ranked third in the UMAC. During conference play, she averaged 3.35 kills per set.



St. Germaine gets the kill