

MLC SportsPage



MARTIN LUTHER COLLEGE

www.mlc-wels.edu

February 19, 2015



MLC Men Top Crown

The men's basketball team split its games last weekend, losing by seven at Minnesota-Morris on Friday, but defeating Crown 72-63 on Saturday.

Todd Brassow (*MLS*) led the way for MLC in the win over Crown, scoring a career-best 29 points on 12-19 shooting from the field. He scored 21 points in the second half of that game, and earned UMAC Player of the Week honors in men's basketball for the third time this season.

Luke Rothe (*LPS*) continued his recent strong play with 14 points and five assists against Crown, while **Austin Eisenmann** (*FVL*) added 13 points in the win.



Brassow scoops and scores

Women Look to Lock Down Tournament Spot



Schultz shoots for three

The women's basketball team sits in fourth place in the UMAC heading into the final weekend of the season after a split last weekend at Minnesota-Morris and Crown.

MLC is 8-14 overall and 7-5 in conference play, and holds a one-game lead over Bethany Lutheran for the fourth and final spot in next week's UMAC Tournament.

Grace Schultz (*FVL*) led MLC in Saturday's 76-52 win over Crown with 16 points and ten rebounds. **Mariah Schoof** (*MVL*) came off the bench to add 15 points.

All 13 active players scored in that game for the Knights, leading to the team's highest point total of the season.

Baseball Picked Fifth in Preseason Poll

MLC baseball finished in a tie for fifth place in the UMAC Preseason Poll released by the conference this week.

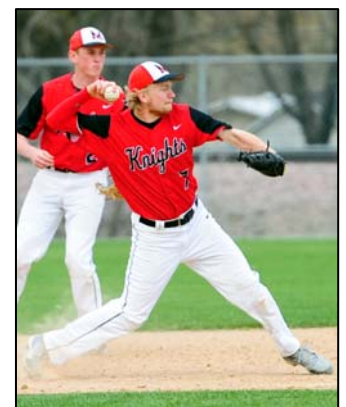
Upcoming Events at MLC

2/20 WBB @Northland
MBB @Northland

2/21 WBB @St. Scholastica
MBB @St. Scholastica

The Knights must replace eight key performers from last season, but return experience on the mound thanks to veterans **Andrew Nemmers** (*LPS*), **Matt Olson** (*SCLHS*), **Jonathan Kock** (*LPS*), and **Travis Kretsch** (*MVL*).

In the field, Olson and Nemmers join returning shortstop **James Hemmelman** (*Luther*) to lead an inexperienced line-up.



Hemmelman turns two