



Welcome and Introductions



Professor Aaron Robinson
Professor of English, Cultural
Diversity Coordinator



Professor Luke Thompson
Professor of Theology



Professor Daniel Waldschmidt
Professor of Greek & Theology



Duties are currently being disseminated via committee

- Vice President for Academics--Jeff Weichman
- Dean of Academics--Ben Clemons
- Public School Placement Coordinator--Cindy Whaley
- College Student Teaching Supervisors—Jennifer Krause, Jennifer Mahlberg, Ron Ohm, Alan Uher, Kelli Green
- Field Experiences Assistant—Megan Plocher

Assignments by School Year



Emergency Teachers

Cambridge, MN – Preschool

Citrus Heights, CA – Kindergarten

Sarasota, FL – Grades 1-2

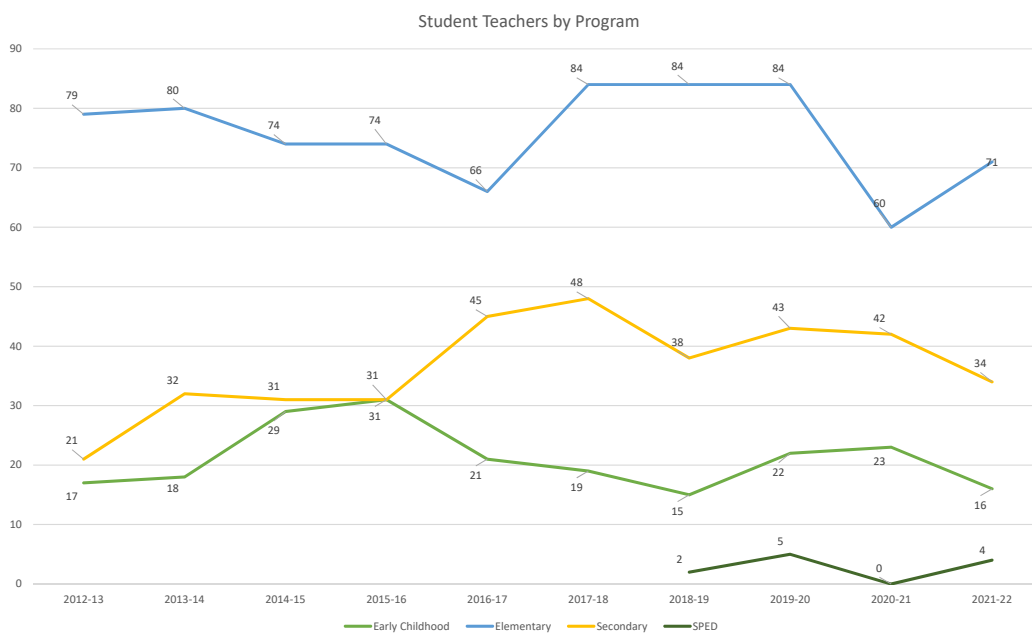
Milwaukee, WI – Kindergarten

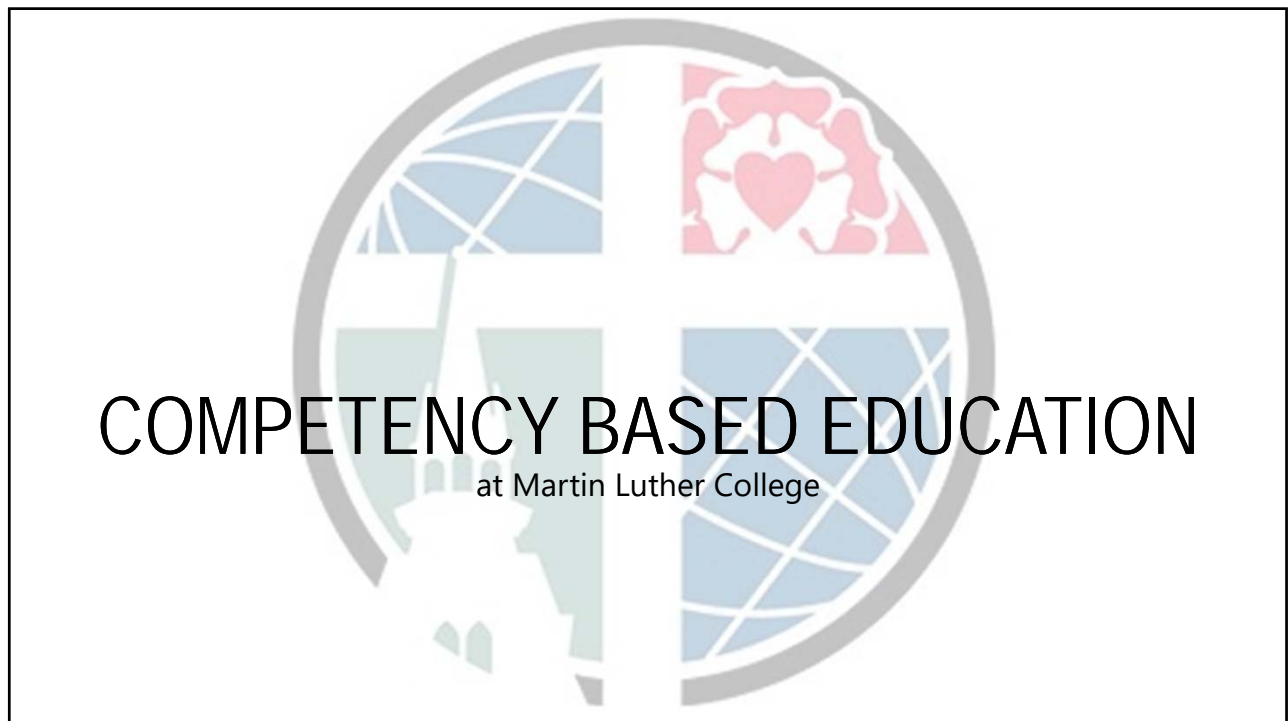
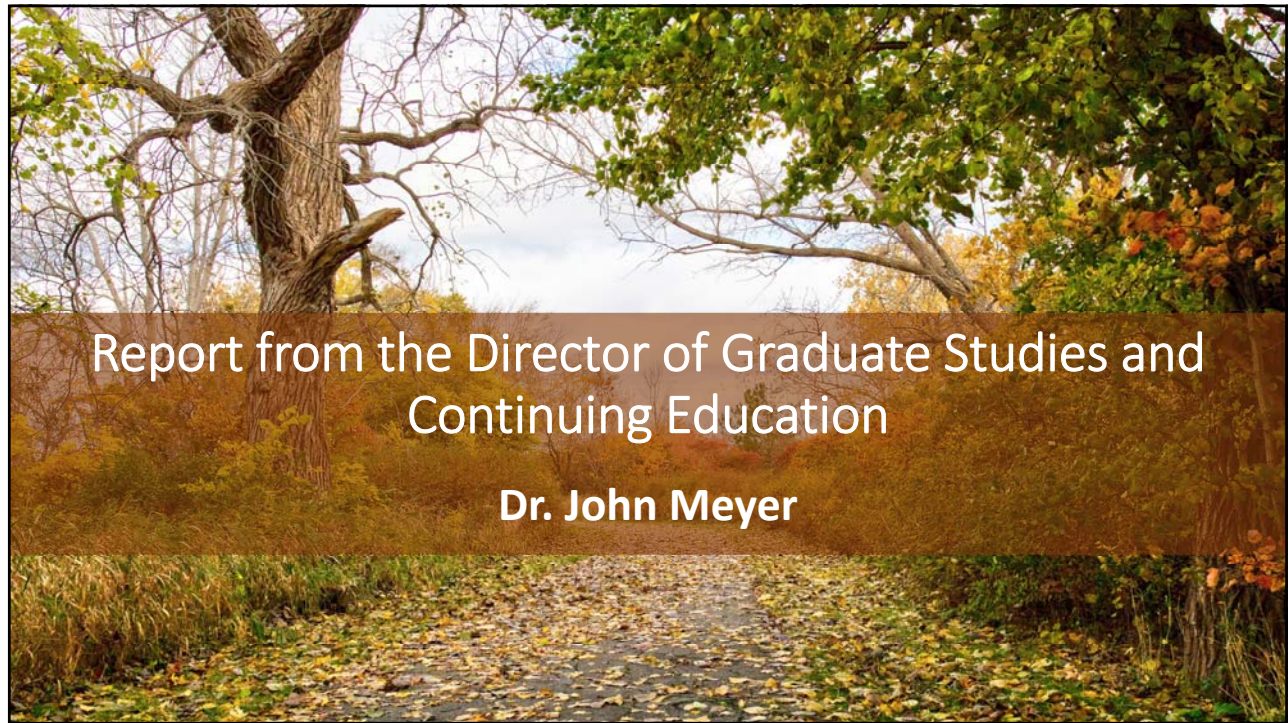
Liberty Hill, TX – Kindergarten

Missouri City, TX – Grade 1

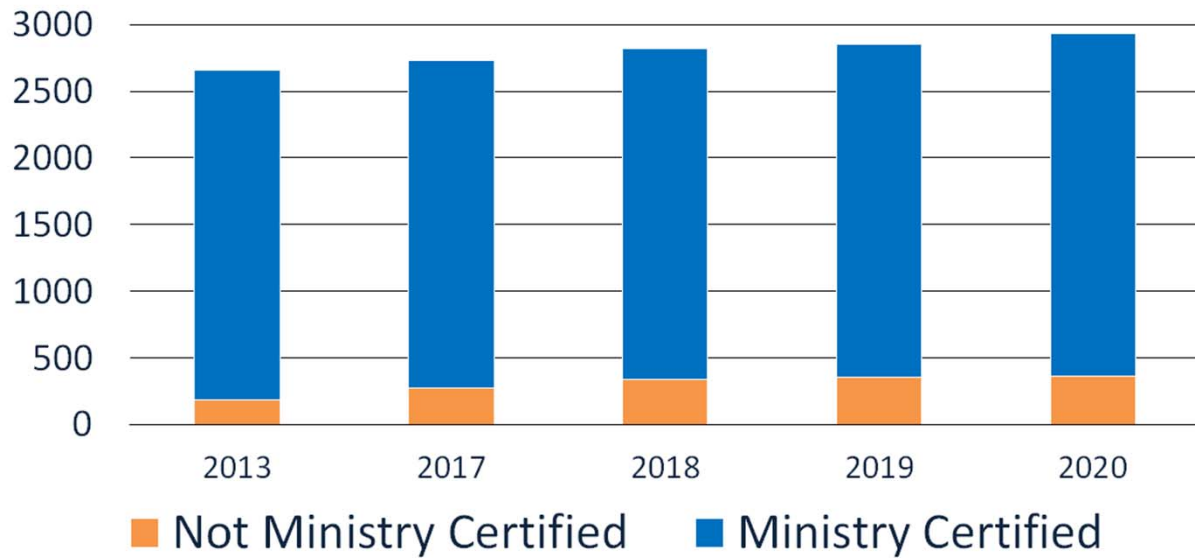
Maitland, FL – Kindergarten

Crete, IL – Grades 7-9, 11 Science and Technology

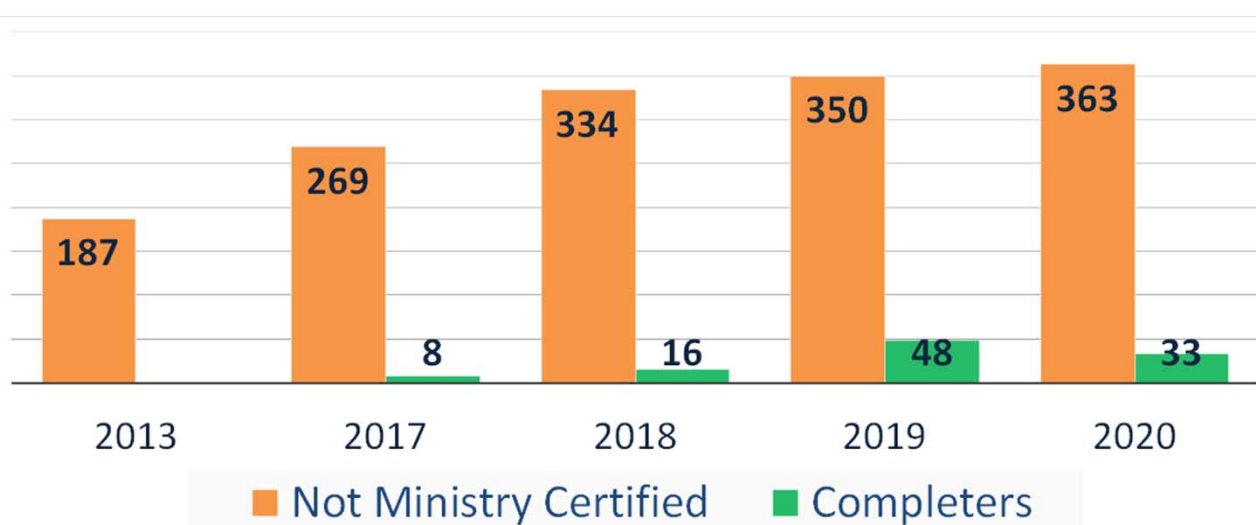




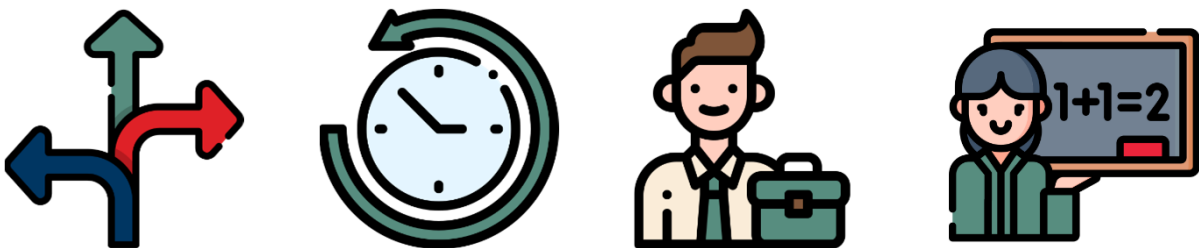
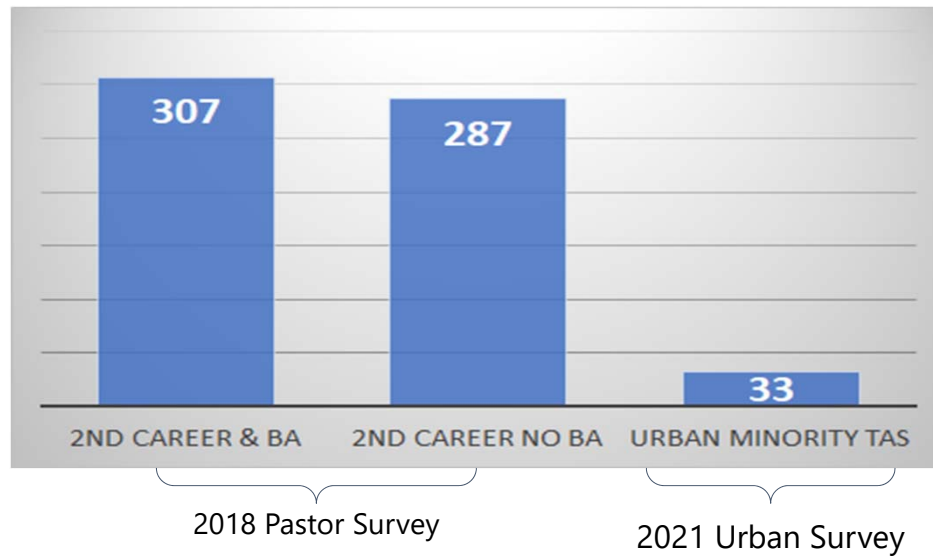
MLC is Falling Short on



Teaching Ministry Certification Can't Keep Pace



Potential Non-Traditional Candidates

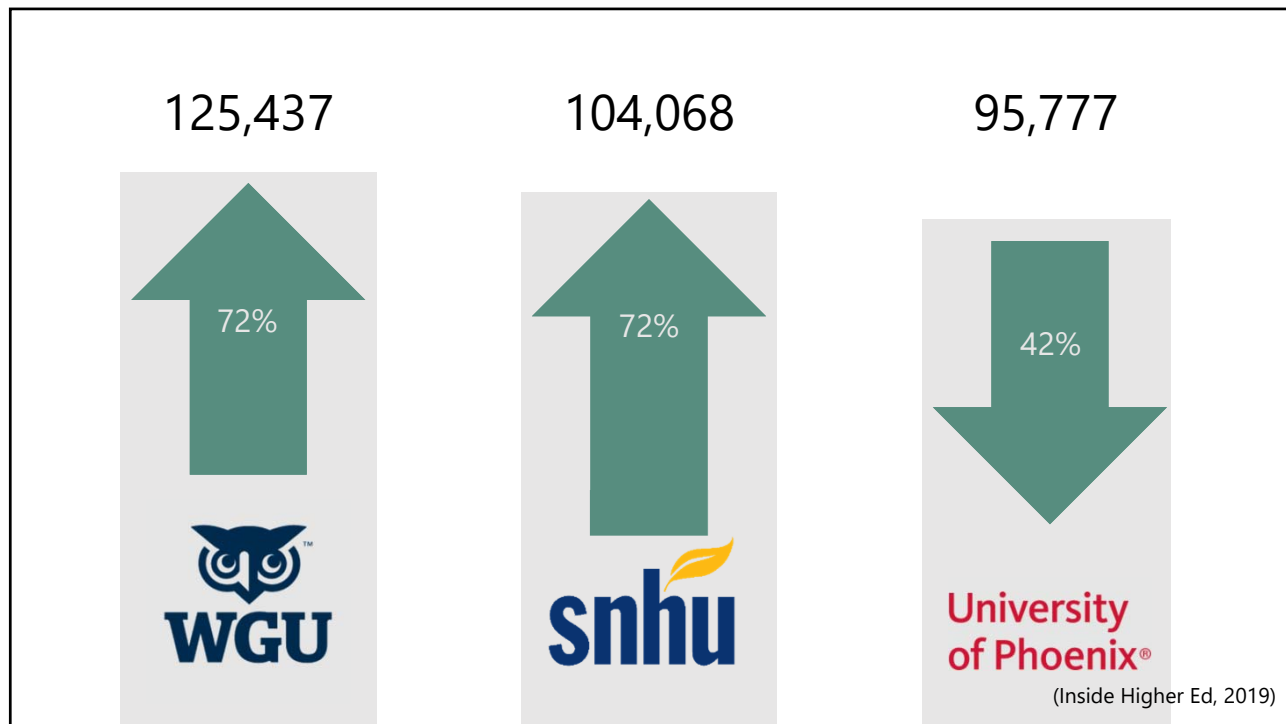












CONSIDERATIONS

Competency-Based Education

- ☒ Flexible
- ☒ Affordable
- ☒ Amenable to previous experiences/learning
- ☒ Full-time employment friendly
- ☒ Universally available
- ☒

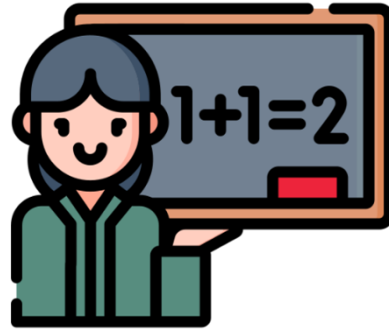




	Constants	Variables
Traditional	 	  
Competency Based	  	 



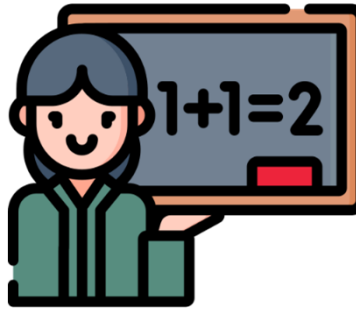
Gen Ed &
Content Courses



PROFESSIONAL
COURSES

PROFESSIONAL & EXPERIENCE-BASED COURSES

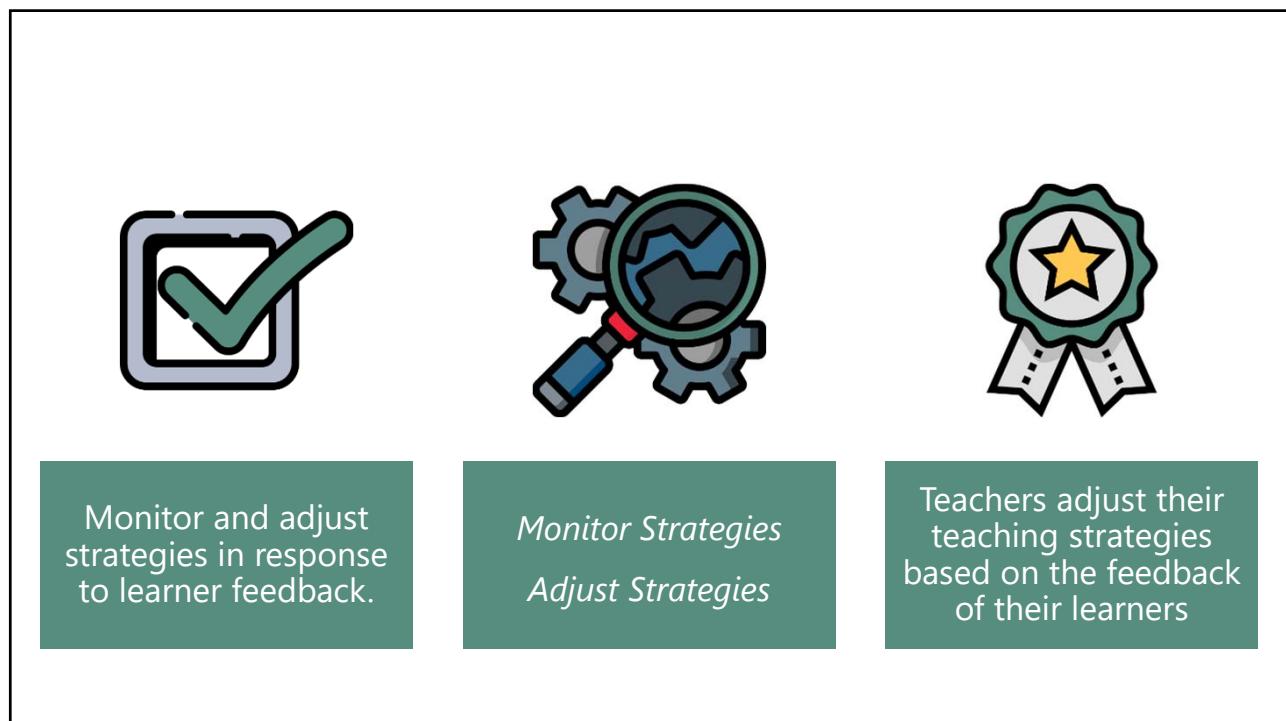
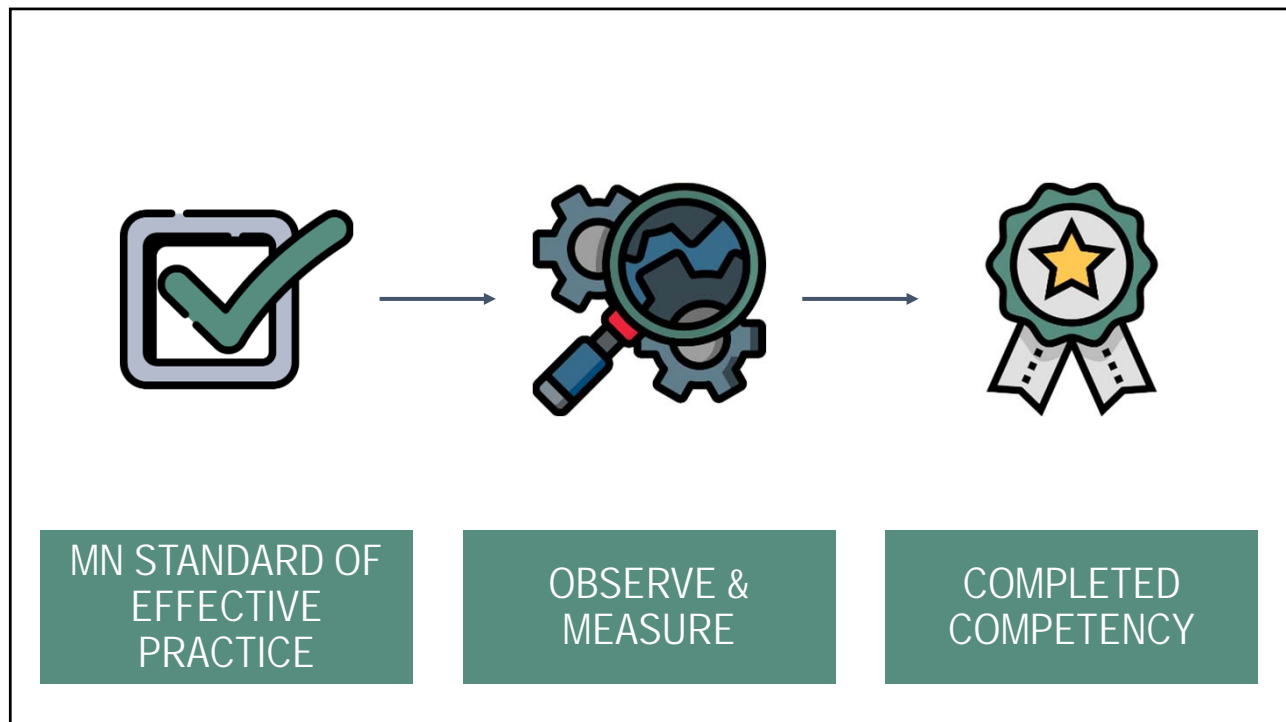
Professional Education		37 credits
EDT3002	Teaching with Technology	3
EDU3201	Children's Literature	2
EDU3205	Teaching Language Arts	2
EDU3210	Teaching Reading	4
EDU3215	Teaching Religion	3
EDU3220	Teaching Music	2
EDU3225	Teaching Physical Education	2
EDU3230	Art in Elementary & Middle Schools	2
EDU3235	Teaching Social Studies	1
EDU3241	Teaching Science Concepts	3
EDU3247	Teaching Mathematics in Pre-K -8 th Grade	1
EDU4210	Curriculum & Instruction in Elementary & Middle Schools	3
PSY2002	Psychology of Human Growth & Development	3
PSY3020	Psychology of Learning	3
SPE2101	Educating the Exceptional Learner	3
Field Experiences		19 credits
EDU1401	Early Field Experience I	.5
EDU2401	Early Field Experience II	.5
EDU3401	Early Field Experience III	.5
EDU3405	Individual Field Experience	.5
EDU3411	Literacy Clinical	1
EDU4253	Student Teaching in Elementary & Middle Schools I	10
EDU42xx	<u>Student Teaching in Elementary & Middle Schools II - Menu</u>	6
	EDU4260 (No Minor, Non licensed Minor, Academic Minor)	
	EDU4270 (Communication Arts and Literature Minor)	
	EDU4271 (Mathematics Minor)	
	EDU4272 (Science Minor)	
	EDU4273 (Social Studies Minor)	

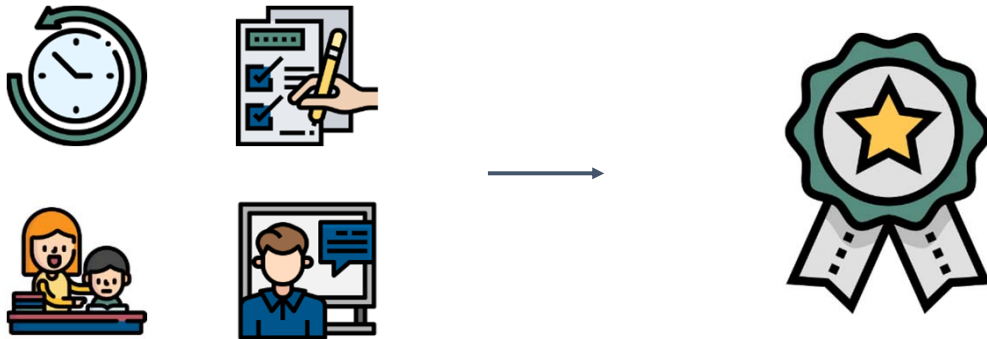


STANDARDS OF EFFECTIVE PRACTICE



PASSING ONE COURSE = MEETING MULTIPLE
SEPs

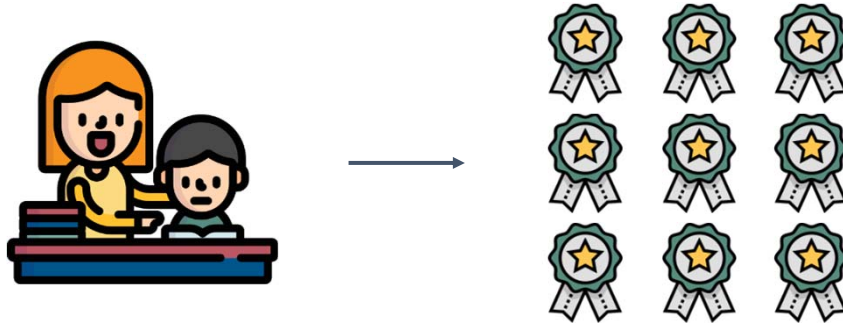




COMPETENCIES ARE MET IN VARIOUS WAYS



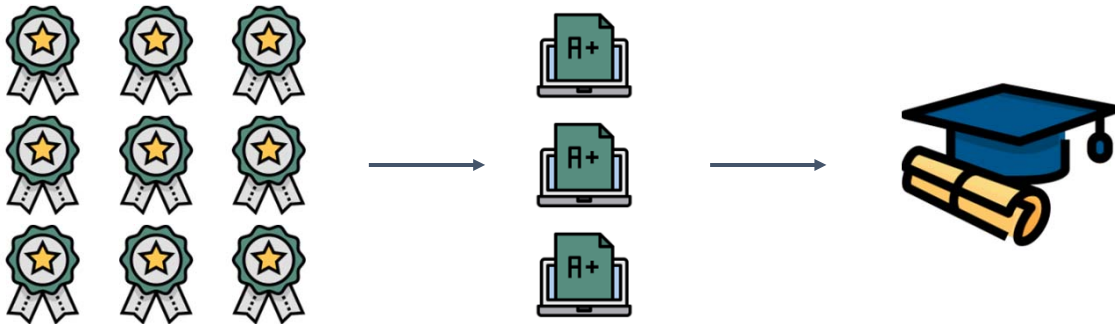
COMPETENCY ORDER CAN BE FLEXIBLE



ONE ACTIVITY COULD PROVE SEVERAL
COMPETENCIES



MEETING REQUIRED COMPETENCIES = COURSE
CREDIT




COMPLETED COMPETENCIES = COMPLETED COURSES

Next Steps

1. Secure Funding (\$1.2 million over five years)
2. Add Director & Instructional Designer
3. Obtain accreditor and state licensure approval

Critical Race Theory



Report from the MLC Unit Leader/Licensure Officer
Dr. Cindy Whaley



Continuing Approval

- Special Education: Academic and Behavioral Strategist (K-age 21) *RIPA*
- Special Education: Learning Disabilities (K-12) *RIPA*
- Computer, Keyboarding, and Related Technology Endorsement (K-8) *minor*
- Early Childhood (Birth-Grade 3) *undergrad*
- Elementary (Grades K-6) *undergrad*
- Communication Arts and Literature (Grades 5-12) *undergrad*

Continuing Approval with Continuous Improvement Focus

Undergrad

- Middle Level Communication Arts and Literature (Grades 5-8)
- Middle Level Science (Grades 5-8)
- Middle Level Mathematics (Grades 5-8)
- Middle Level Social Studies (Grades 5-8)
- Spanish (K-8)

Post-bacc

- Early Childhood Education (Birth-Grade 3)
- Communication Arts and Literature (Grades 5-12)
- Spanish (K-8)
- Physical Education (K-12)
- Science – Chemistry, Life Science, Physics (K-12)
- Social Studies (Grades 5-12)
- Instrumental Music (K-12)
- Vocal Music (K-12)
- World Languages and Cultures: Spanish (K-12)

Probationary Approval with Annual Report due December 31, 2021 and 2022

- Elementary (Grades K-6) *post-bacc*
- Physical Education (K-12) *undergrad*
- Mathematics (Grades 5-12) *undergrad*
- Science – Chemistry (Grades 9-12) *undergrad*
- Science – Physics (Grades 9-12) *undergrad*
- Science – Life Science (Grades 9-12) *undergrad*
- Instrumental Music (K-12) *undergrad*
- Vocal Music (K-12) *undergrad*
- World Languages and Cultures: Spanish (K-12) *undergrad*
- Social Studies (Grades 5-12) *undergrad*

Elementary Education (post-bacc)

PELSB Comment

Any teacher seeking an initial Minnesota license must complete an edTPA.

*Probationary Approval with Annual Report due
December 31, 2021 and 2022*

Physical Education (K-12) *undergrad*
 Mathematics (Grades 5-12) *undergrad*
 Science – Chemistry (Grades 9-12) *undergrad*
 Science – Physics (Grades 9-12) *undergrad*
 Science – Life Science (Grades 9-12) *undergrad*
 Instrumental Music (K-12) *undergrad*
 Vocal Music (K-12) *undergrad*
 World Languages and Cultures: Spanish (K-12) *undergrad*
 Social Studies (Grades 5-12) *undergrad*

Reasons for Probationary Approval:

1. Low n.
2. Disconnect between MTLE + signature assessments and edTPA scores.
3. Not enough assessments from which to collect data to discuss the program.

*Probationary Approval with Annual Report due
December 31, 2021 and 2022*

How MLC can remove the *probationary* approval from these programs:

Elementary Education (post-bacc)

edTPA becomes part of the program

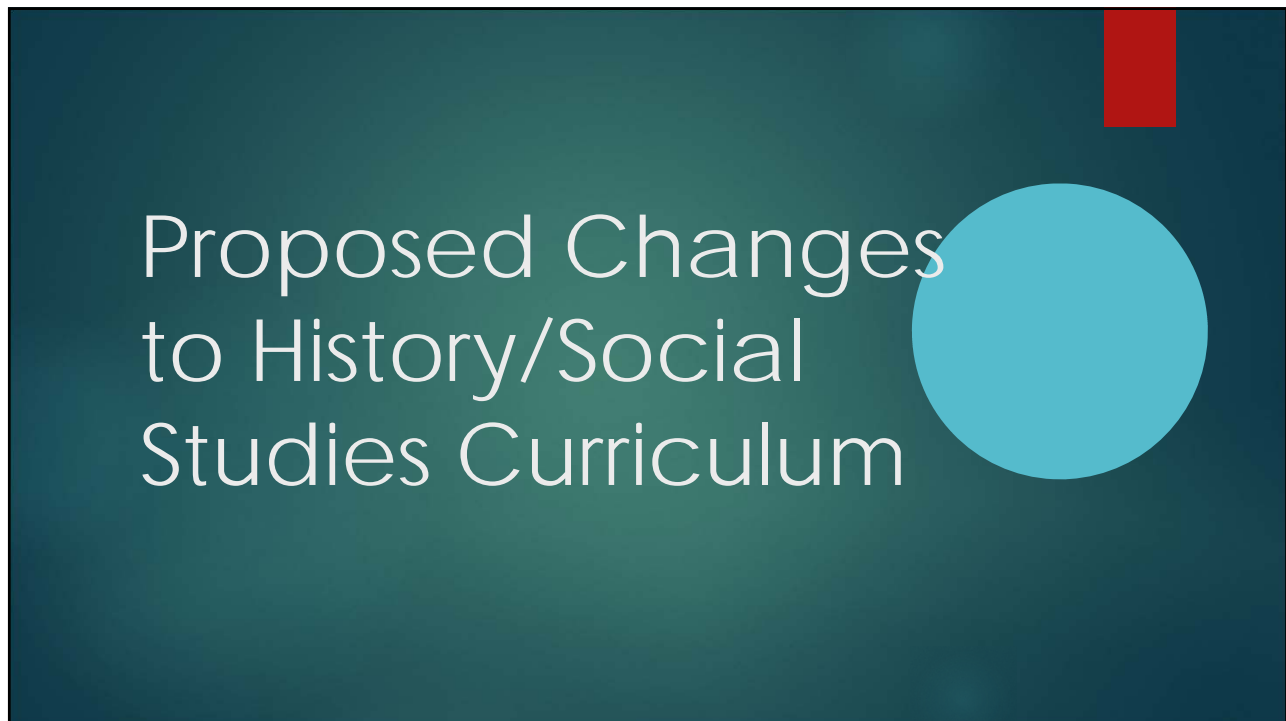
Secondary Education (undergrad)

1. More data to discuss the programs
2. Improved edTPA scores

ACTION ITEM:

Share with your division members and encourage them to enter all rubric data (old and new) possible by November 15, 2021.

THANK YOU!



Current Courses

- ▶ General Education & Required Coursework
 - ▶ Modern West (Western world from Renaissance to WWII)
 - ▶ United States History Since 1945
 - ▶ World Regional Geography
- ▶ Additional Licensure Courses in Social Studies Major
 - ▶ Government (also in minor)
 - ▶ Economics (also in minor)
 - ▶ Sociology

Proposed Courses

- ▶ General Education and Required
 - ▶ United States History 1 (Colonization until 1898)
 - ▶ United States History 2 (1898 to the Present)
 - ▶ World Regional Geography
 - ▶ (Discussion continues to determine if some programs could maintain Modern West instead of US History 1 or Geography)
- ▶ Additional Licensure Requirements
 - ▶ Social Studies for Educators 1 (minor)
 - ▶ Social Studies for Educators 2 (major)

Rationale for New History Courses

- ▶ Elementary majors will teach American history in schools but currently learn almost none of that content in college courses
- ▶ Better fit for PERCA standards in the new courses (especially those relating to indigenous people)
- ▶ There is currently a content “gap” from 1877 to 1945
- ▶ Provide better progression of historical knowledge and development of historical thinking, research and writing skills
- ▶ Students need to learn about the Constitution, the development of America, relationships regarding race and ethnicity, and the Civil War to understand issues in our nation today

Rationale for Social Studies for Educators

- ▶ We are training educators, not economists, sociologists and political scientists
- ▶ With only one class in each of those areas, it is difficult to find a “highly qualified” instructor for each
- ▶ We already have a highly qualified instructor in Social Studies Education
- ▶ Pedagogy can be incorporated with the content in these new courses

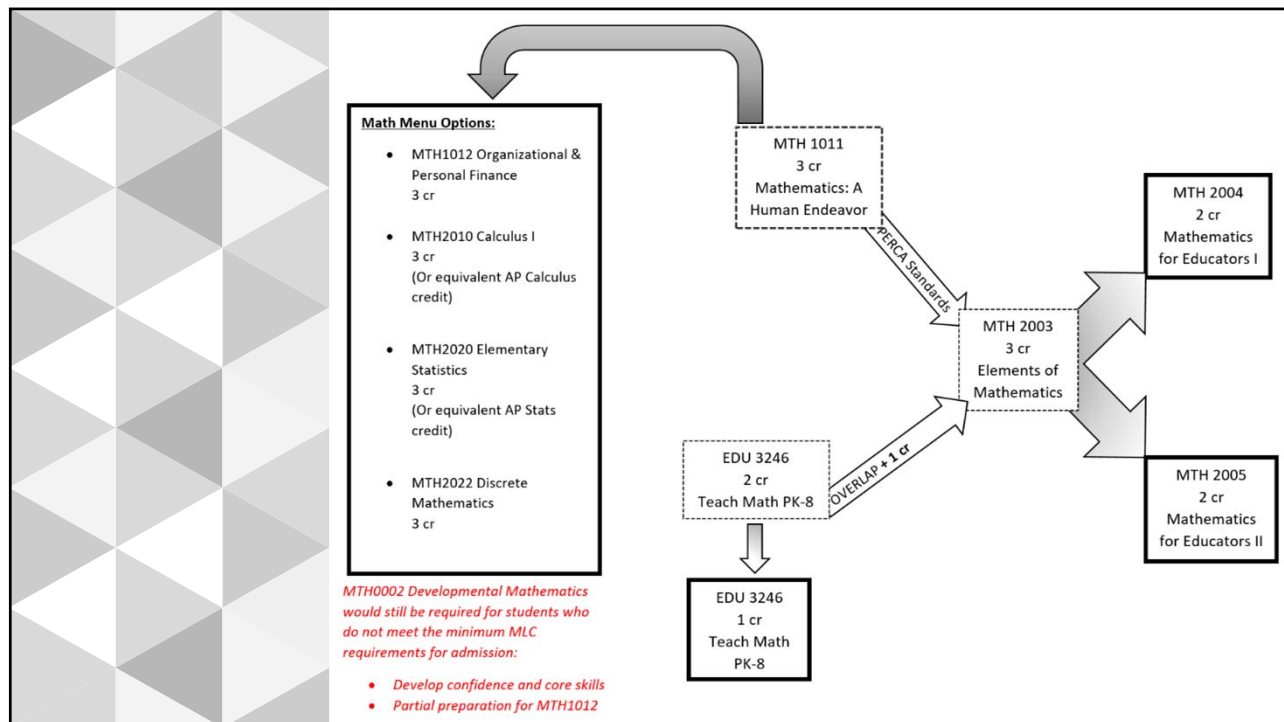
Next Steps

- ▶ Hopefully, new courses will be approved by the plenary faculty in December
- ▶ Divisions will incorporate new courses into program plans by March 2022 for scheduling
- ▶ US History 1 will be introduced in 2022-2023
- ▶ Other courses will be phased in so students currently in program may finish out their old program plan, next year's Freshmen will follow new program plans and take the new courses



Report from the Math/Science Division Chair

Dr. James Carlovsky



Benefits of these course changes

- Flexibility of options with AP math credits
 - Recruitment benefit
 - Ease within many program plans
- Flexibility of true choices from a Gen Ed math menu
- Creation of a valuable Organizational and Personal Finance course
 - Pre-seminary and Education student benefits
 - Moving of standards to other courses





- Removal of overlapping redundant curriculum in Teaching Math
- Math for Educators 1 & 2 split
 - Early childhood only benefit from Math for Educators 1 only
 - Secondary only math/science education benefit from the addition of Math for Educators 2 only
 - Time given for building skills in teaching stats, probability, algebra, and geometry
- Ease of scheduling 1 & 2 credit courses vs. 3 credit courses

Student Teaching--Fall 2021

School	# of Cooperating Teachers	# of Student Teachers
BOLD High School	1	1
Cedar Mtn. HS	2	2
Central HS	1	1
Comfrey Secondary	1	1
GFW Elementary	1	1
GFW Jr-Sr HS	1	1
Fairmont Elementary	1	1
Immanuel, Hutchinson	3	4
Jefferson Elementary	3	4
LCWM Secondary	4	4
MLC ECLC	4	9
Minnesota New Country Elementary	1	2
Minnesota New Country Secondary	4	4
New Ulm High School	2	2
New Ulm Middle School	2	2
Redwood Valley Middle School	1	1
Risen Savior, Mankato	2	2
Springfield Elementary	4	6
St. James High School	1	1
St. John, Redwood Falls	2	2
St. Paul's, Arlington	1	1
St. Paul's, New Ulm	2	2
Washington Learning Center	1	1
TOTAL	45	55
Lutheran School		

Clinicals--Fall 2021

School	# of Cooperating Teachers	# of Clinical Students
BOLD Elementary	3	3
Cedar Mtn. Elementary	1	1
Fairmont Elementary	4	5
GFW Elementary	3	5
Immanuel, Hutchinson	2	2
Jefferson Elementary	9	14
LCWM Elementary	1	2
LCWM Secondary	1	2
Madelia Elementary	2	3
MN New Country Elementary	1	2
Minnesota Valley Lutheran HS	1	1
Nicollet Early Childhood Center	1	1
Nicollet Secondary	1	2
New Ulm Middle School	1	1
Redwood Valley Senior HS	1	1
Risen Savior, Mankato	1	1
Sleepy Eye Elementary	2	4
Sleepy Eye HS	1	2
Springfield Elementary	3	3
St. James Northside Elementary	2	3
St. John, Redwood Falls	1	1
St. John Early Childhood LC	1	2
St. Paul's, Arlington	1	1
St. Paul's, New Ulm	3	4
St. Paul's, St. James	1	1
Trinity, Nicollet	1	1
Washington Learning Center	2	2
TOTAL	51	70
Lutheran School		

edTPA PELSB Discussion

Analyzing MLC's
SEP Form Data and
Clinical Data (NEW)

J-Term Update

Spanish K-8 Placement Challenge

MACTE Updates



Upcoming Meeting
Tuesday, April 26, 2022

