

# Licensure Advisory Council

**MARTIN LUTHER COLLEGE | CAFETERIA CONFERENCE CENTER**

October 30, 2018 | 4:30 p.m.

Welcome!

# Approval of Minutes

# Report from the Director of Field Experiences

**Professor Paul Tess**



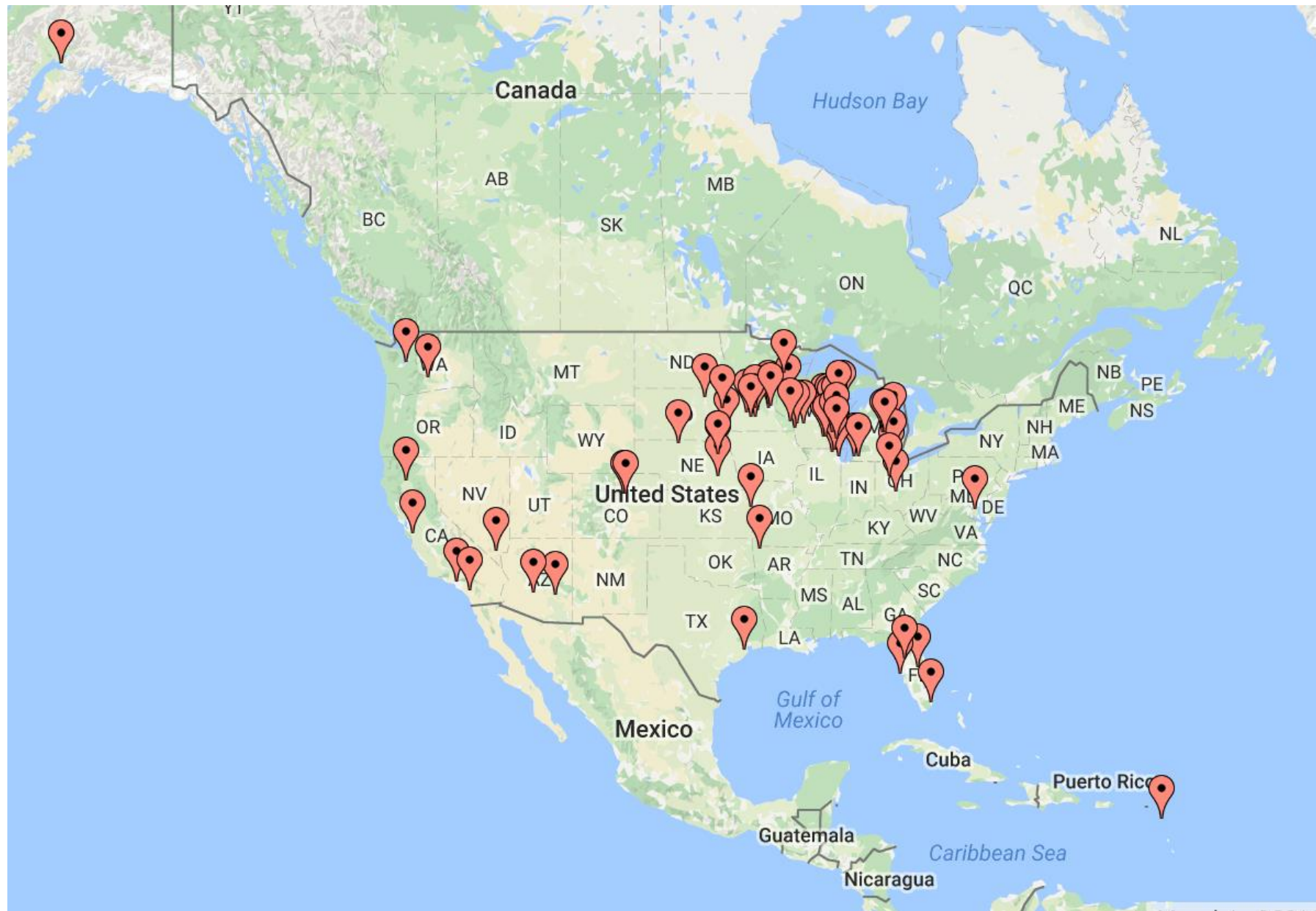
The mission of MLC is to train  
a corps of Christian witnesses who are  
qualified to meet the ministry needs of  
the **Wisconsin** Evangelical Lutheran Synod.

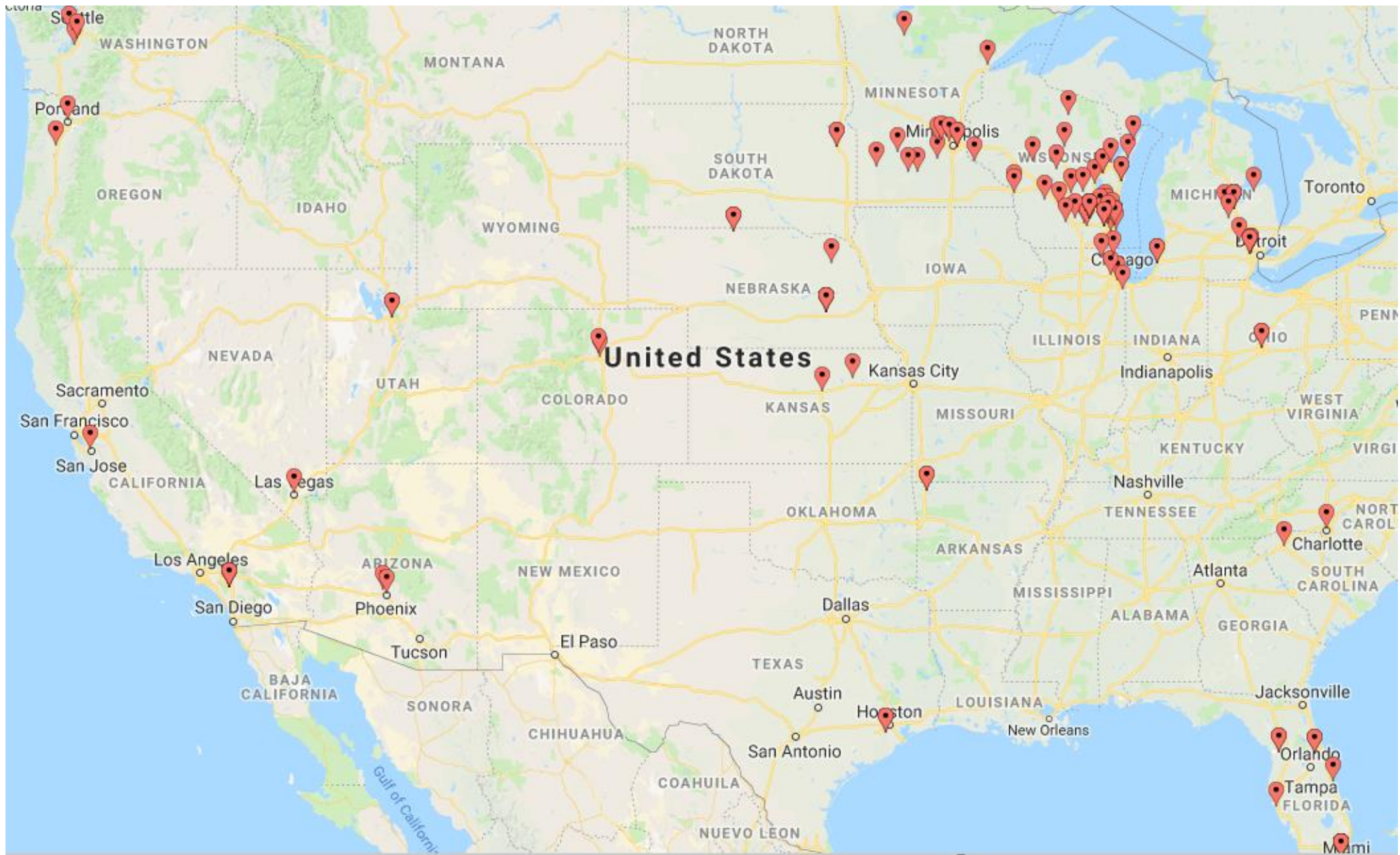




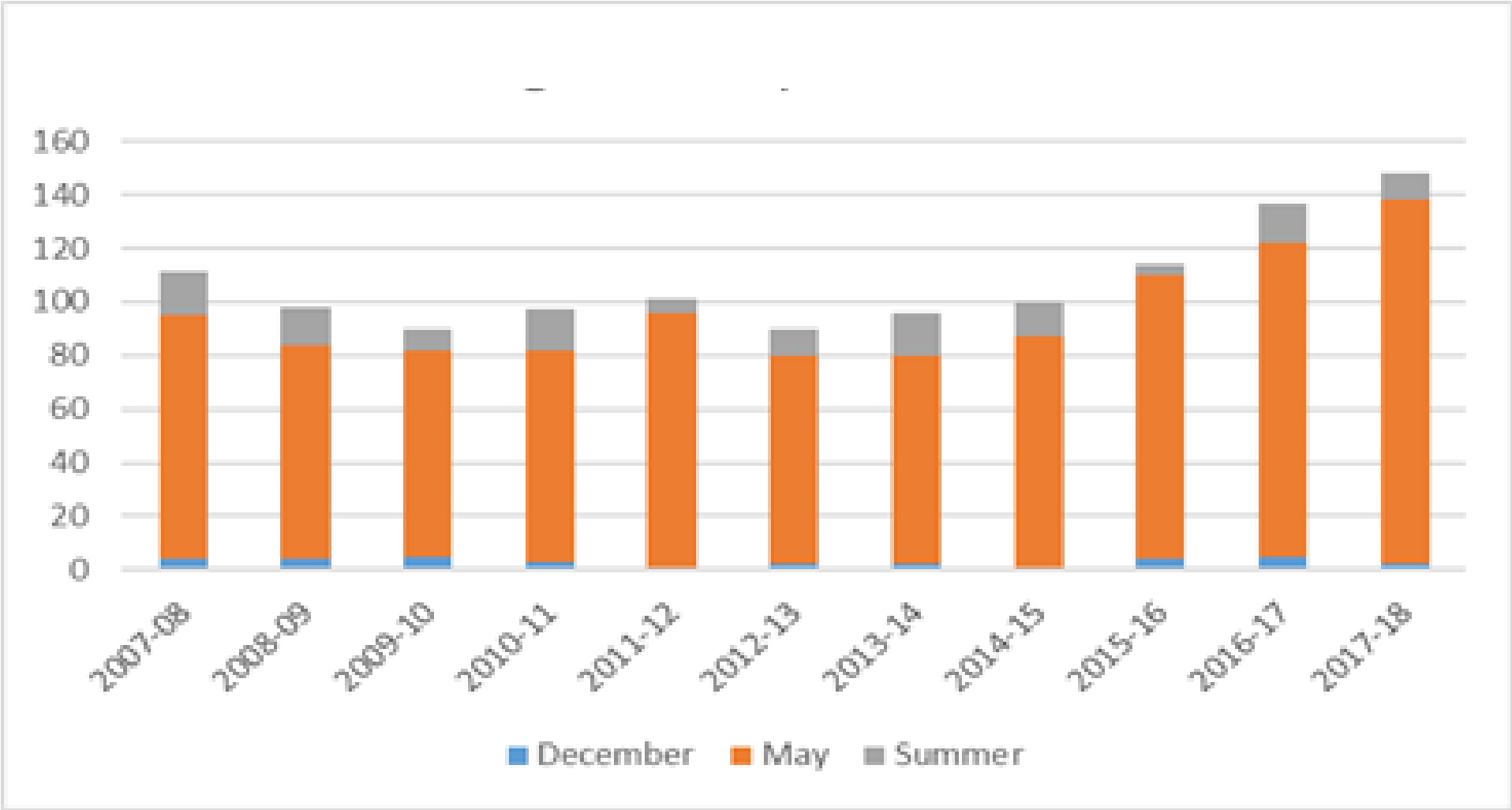








# Assignments by School Year



## Other Duties

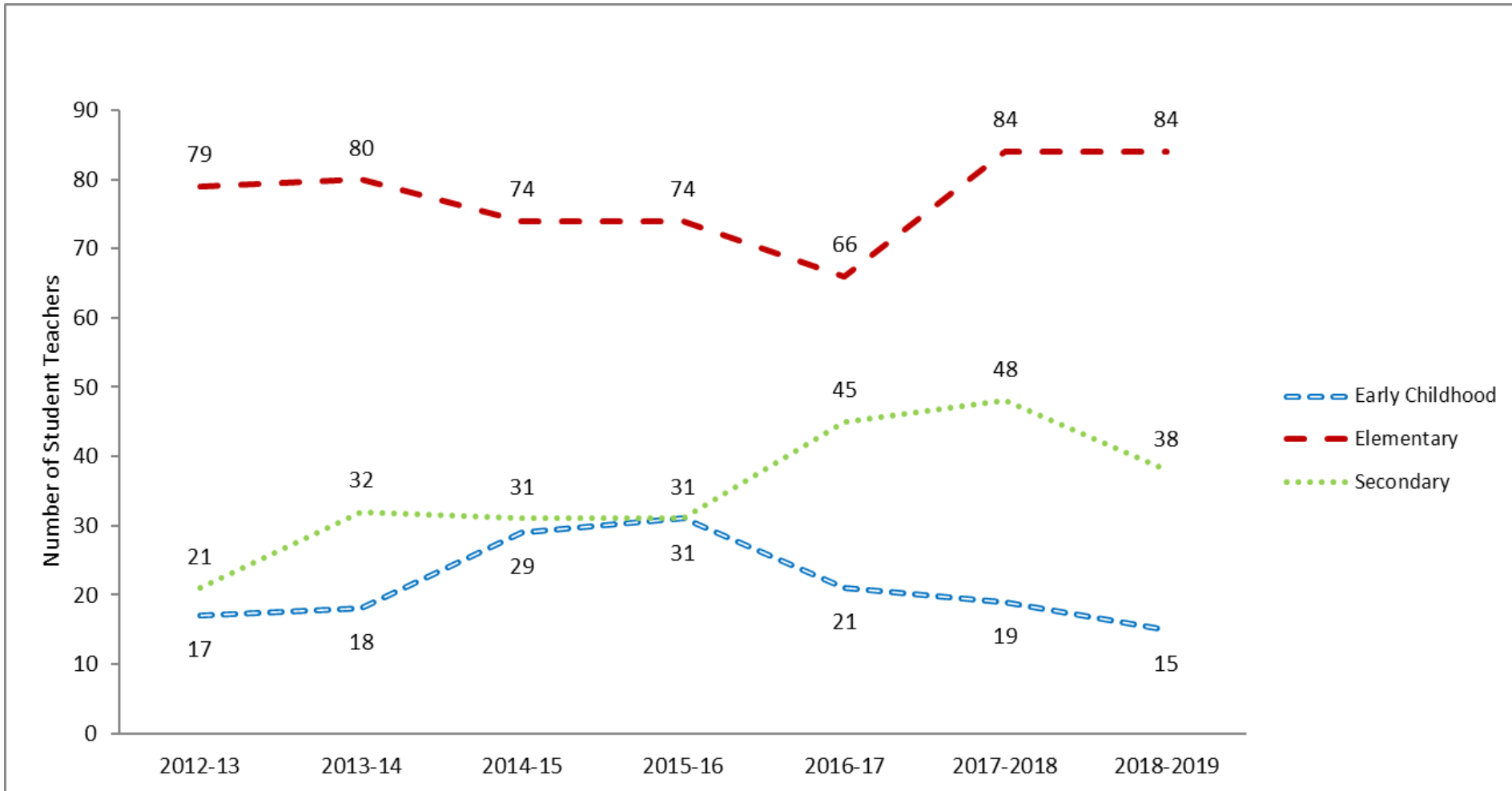
<b>Athletic Director</b>	<b>9</b>
<b>Coach</b>	<b>4</b>
<b>Church Organist</b>	<b>5</b>
<b>School Music</b>	<b>6</b>
<b>Spanish</b>	<b>2</b>
<b>Tutor (dorm sup.)</b>	<b>22</b>
<b>Principal Apprentice</b>	<b>9</b>
<b>ECE Director App.</b>	<b>12</b>

# Emergency Teachers

- **Whiteriver, AZ**
- **Garden Grove, CA**
- **San Jose, CA**
- **Libertyville, IL**
- **West St. Paul, MN**
- **Montello, WI**



# Student Teaching by Program



# Report from the Director of Assessment

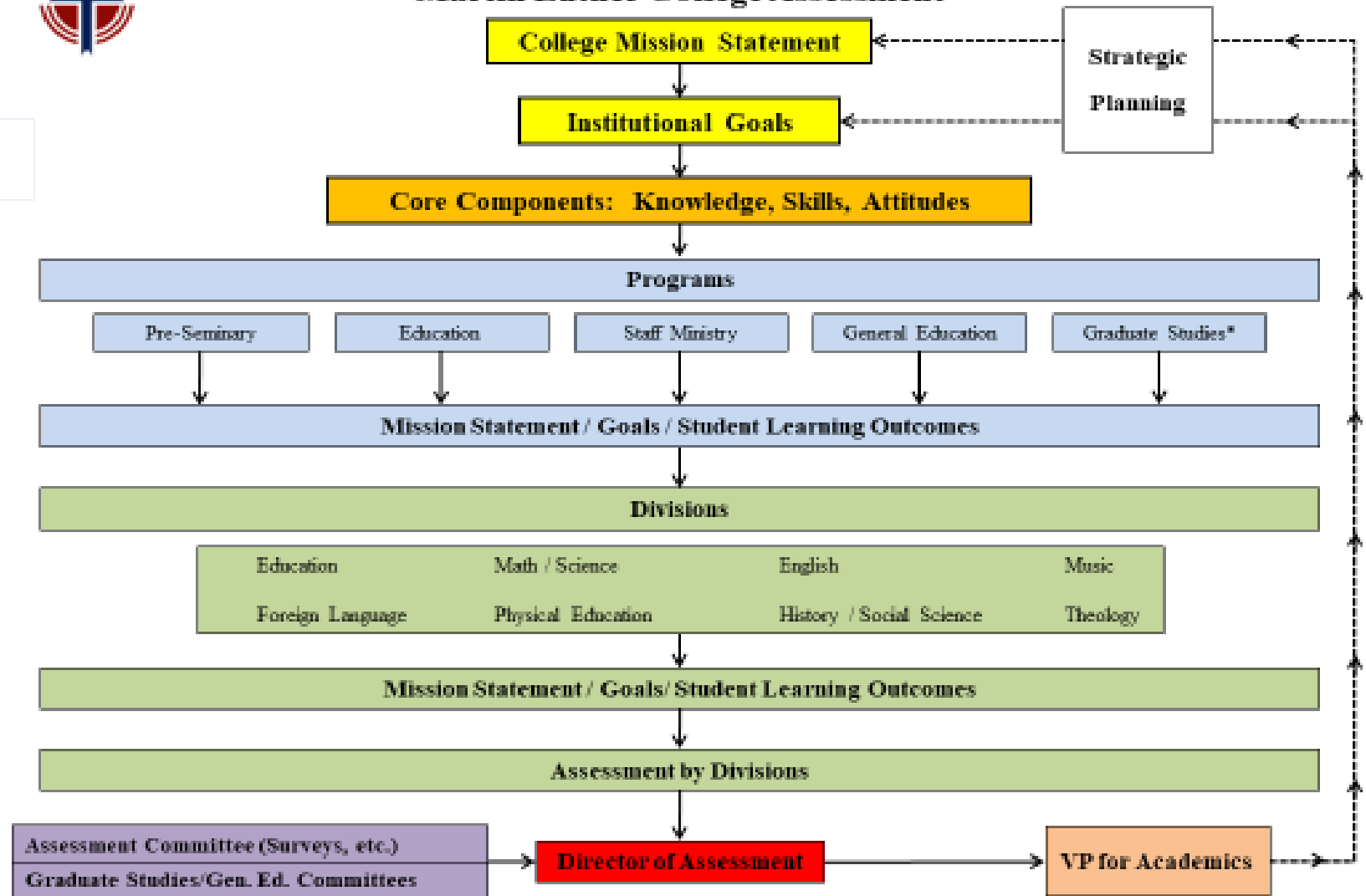
**Dr. Larry Lotito**

# Assessment

(See Handout in Folder)



## Martin Luther College Assessment





# Report from the Higher Learning Commission Visit

**Dr. Jeff Wiechman, Vice President for Academics**

# Dinner Break

**Please help yourself to the dinner buffet in the public dining area. You may bring your food back to this room in 15 minutes to begin the next session.**

# Preparation for PELSB Visit

**Dr. Cindy Whaley, Licensure Officer**

# Who is PELSB?

## Professional Educator Licensing and Standards Board

- PELSB collaborates with Minnesota higher education institutions to ensure the highest possible quality for programs offering teacher training.
- Institutional review procedures require that an on-site visit be completed every 5-7 years to verify the unit's compliance to the standards of *MN Rules Part 8705.1000 subpart 2-10*.
- MLC's upcoming visit is **March 24-26, 2019**.



# Overview of the Unit Standards of MN Rule 8705.1000 Subparts 2-10

- Subpart 2 Professional, pedagogical, and content studies
- Subpart 3 Field Experience
- Subpart 4 Candidate selection
- Subpart 5 Candidate advising
- Subpart 6 Monitoring candidate progress and demonstrating standards
- Subpart 7 Monitoring program effectiveness
- Subpart 8 Qualifications and assignment of faculty
- Subpart 9 Unit leadership
- Subpart 10 Unit governance

# Why is the Licensure Advisory Council (LAC) important to this visit?

- The Licensure Advisory Council was created in answer to Minnesota statute 8705.1000 Subpart 2.H, 7.C, and 7.D

# Why is the LAC important to this visit?

- **Subpart 2. Professional, pedagogical, and content studies. The unit must provide professional, pedagogical, and content studies that include the following:**
  - H. The unit's programs were developed in collaboration with academically qualified faculty, along with licensed, experienced school personnel in the content area, and other stakeholders;

# Why is the LAC important to this visit?

- **Subpart 7. Monitoring program effectiveness. The unit must demonstrate monitoring program effectiveness that includes the following:**
  - C. The unit has an operation process to obtain feedback from graduates and employers of graduates on the performance of graduates for use in program evaluation; and
  - D. The unit has an advisory group within external members including cooperating teachers, other school partners, and graduates that regularly assists with the ongoing evaluation and improvement of programs.



## PELSB's Interview with LAC



- **Sunday evening, March 24, 2019 at 4:30 p.m.**
  - Please clear your schedule for an interview with one of the PELSB team members. LAC will be interviewed as a group by one of the team members. The interview will begin promptly at 5:00 p.m.
  - Following the interview, we will continue with a formal dinner and program from 6:00 – 7:30 p.m.

**Thank you for giving your time to help  
MLC ensure quality educator preparation  
programs.**

MARTIN LUTHER  
COLLEGE

